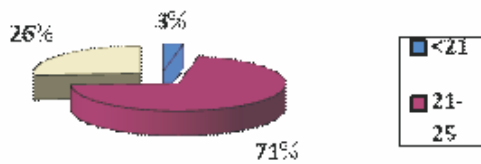
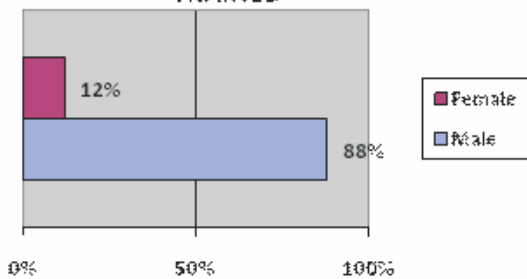


A PROGRAM FOR PROJECT AFFECTED YOUTH IN HARYANA - RELIANCE HARYANA SPECIAL ECONOMIC ZONE LTD.

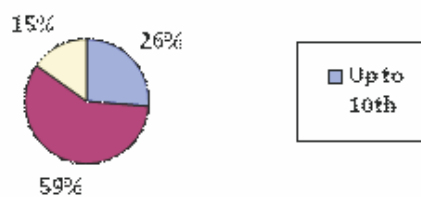
AGE PROFILE OF STUDENTS TRAINED



GENDER PROFILE OF STUDENTS TRAINED



EDUCATION PROFILE OF STUDENTS TRAINED



Reliance Haryana Special Economic Zone Ltd is a company with its registered office in Gurgaon. Under the statutory obligation entrusted by the Central and State legislature under various ACTS and guidelines related the SEZs with respect to resettlement and rehabilitation efforts in the villages falling in Special Economic Zone, RHSL has identified Employability Enhancement Training as one of the areas of focus. CAP has been identified as one of the executing partners for employability enhancement training services in the SEZ areas and its vicinity.

The main aim of this programmed is to facilitate identification and availability of potential livelihood options 300 youth in the age group of 18-25 years and train them in the skills according to the market requirements.

Location

Gurgaon and Jhajjar in Haryana



Number of students trained	300
Number of students placed	240

FAMILY-SIZE PROFILE OF STUDENTS TRAINED

Number	Percentage
< 5	33%
5 to 7	62%
> 7	5%

INCOME PROFILE OF STUDENTS TRAINED

INCOME	PERCENTAGE
</ = Rs.12000 per annum	100%
Rs.12001 to Rs.24000 per annum	-
>Rs. 24001 per annum	-